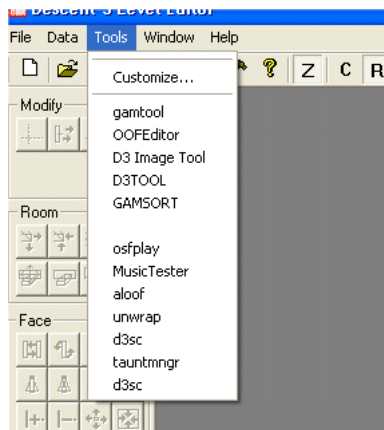


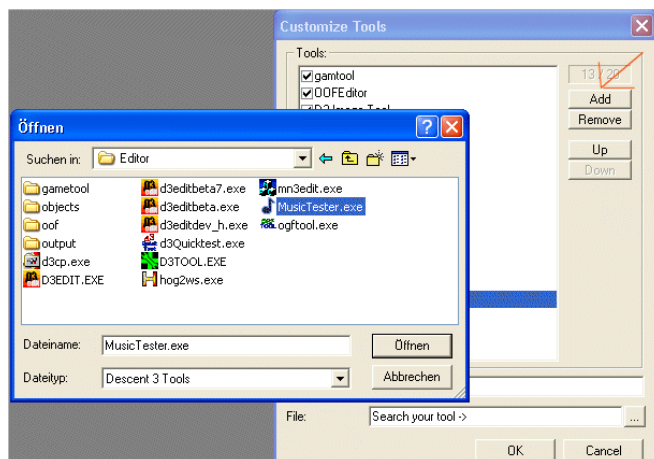
Tools Menu usage (v1.0) Atan

Would be a good idea to create a folder which contains all custom tools you need for D3 editing. Inserting your tools into that folder will help using them without switching to windows always.

This little tutorial will show you how to handle this D3Edit feature. Here is an example of how the tools menu could look like:

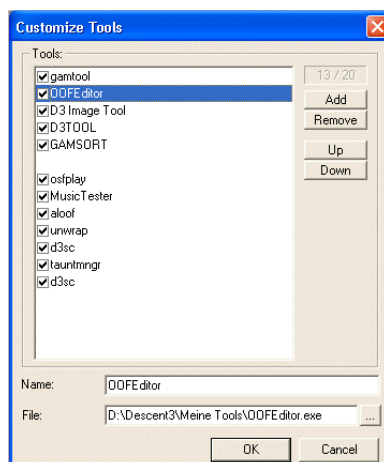


While starting D3Edit the first time all entries are empty. Use Menu ->Tools -> Customize to collect your tools:



Press Add to open a file dialogbox and choose the wanted tool.

If you select the tool it will be inserted into the list. It's possible to name your tool and to set the position inside the menu.



You can handle up to 20 tools inside the tools menu.